



القطر
Alqotr
Creativity and precision



► Contents

▶	_____	About Alqotr
▶	_____	Our clients
▶	_____	Our Services
▶	_____	Our Projects
▶	_____	Our Team
▶	_____	Contact Us

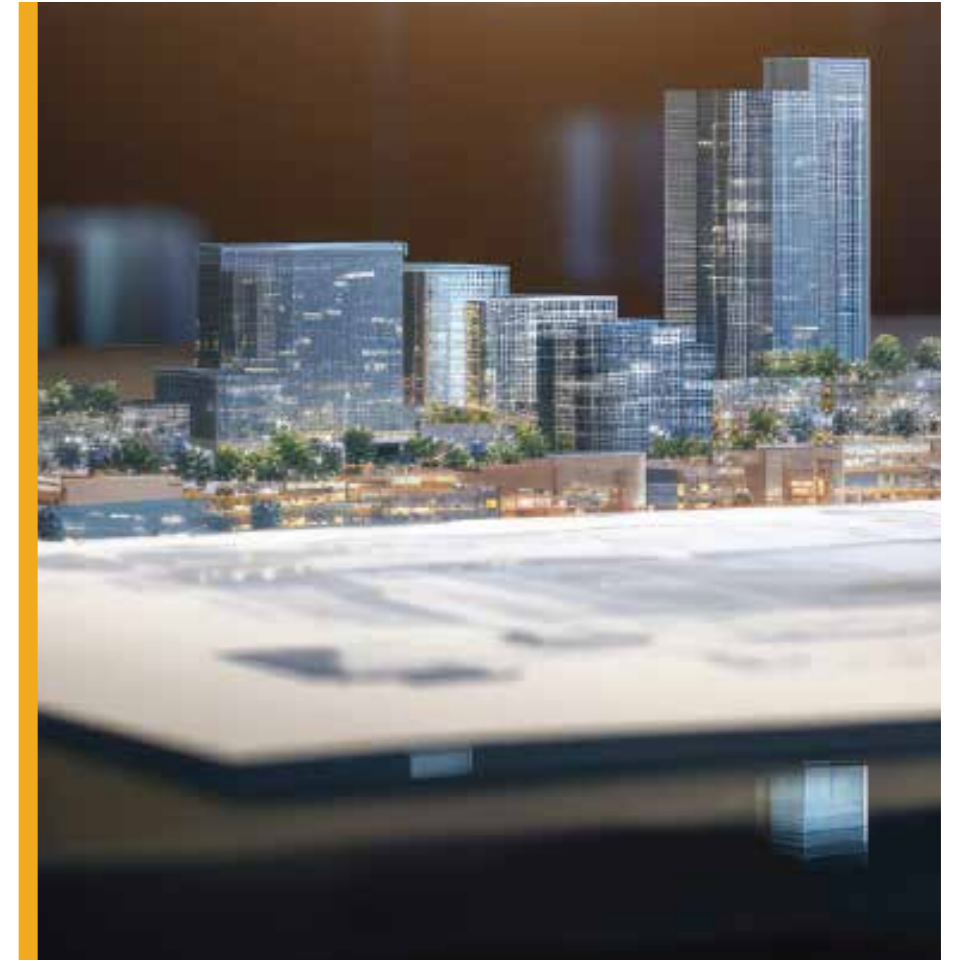


| About Alqotr

► About Alqotr

- ▶ Alqotr Company has launched & established as Saudi company since 2004.
- ▶ The company provides advanced solutions in engineering consultancy, geospatial surveying, urban planning, and managing, integrating, and disseminating large-scale geographical data.
- ▶ Comprehensive services are also offered for municipalities and various utility sectors.

The company has gained the good reputation through Our qualified staff by successfully managing large, intricate projects, technical proficiency, high-quality services, and exceptional customer support.



▶ The role of Alqotr Company in achieving the Kingdom's Vision 2030

Alqotr Company provides a Vital & significant role in realizing Saudi Arabia's Vision 2030 by offering innovative and advanced engineering services and solutions.

Its vision aims to align with the national objectives and contribute to the overall development of the Kingdom through:

- ▶ Enhancing the quality and efficiency of the provided services .
- ▶ Digitizing infrastructure Data and services.
- ▶ Training and developing local talent.
- ▶ Collaboration and partnership with the major organizations and companies.
- ▶ Enhancing the role of e-government.

▶ Our Goal



We seek to achieve continuous development in all engineering fields by investing in modern technology and techniques, developing human resources, and exploiting artificial intelligence technology in the best possible ways.

▶ Our Mission



To provide engineering and consulting services that align with the highest international quality standards, contributing to enhancing client satisfaction and efficiently meeting their requirements professionally and accurately.

▶ Our Values



Professionalism: Excellence in business performance in accordance with the highest international standards.

Passion: The main support for providing innovative, creative solutions.

Development: Staying updated with the latest technologies, equipment, and software ensures our clients receive an exceptional experience.

Team spirit: We always embrace teamwork to fully invest our energy in serving our clients.

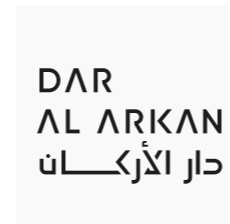
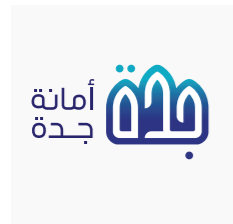


| Our Clients

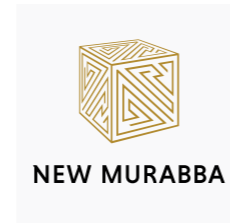
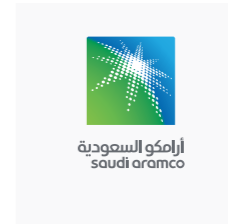
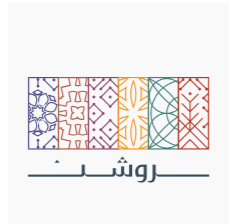
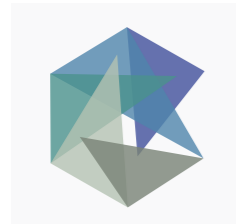


| Our Services

► Some of our clients
Government sector :



► Some of our clients
The semi government sector :



► Some of our clients
Private and individuals sector :



► **Our Services**

- ▶ _____ **1 Geospatial surveying**
- ▶ _____ **2 GIS**
- ▶ _____ **3 Technical support**
- ▶ _____ **4 Urban Planning**
- ▶ _____ **5 Digital Transformation**
- ▶ _____ **6 Consulting**

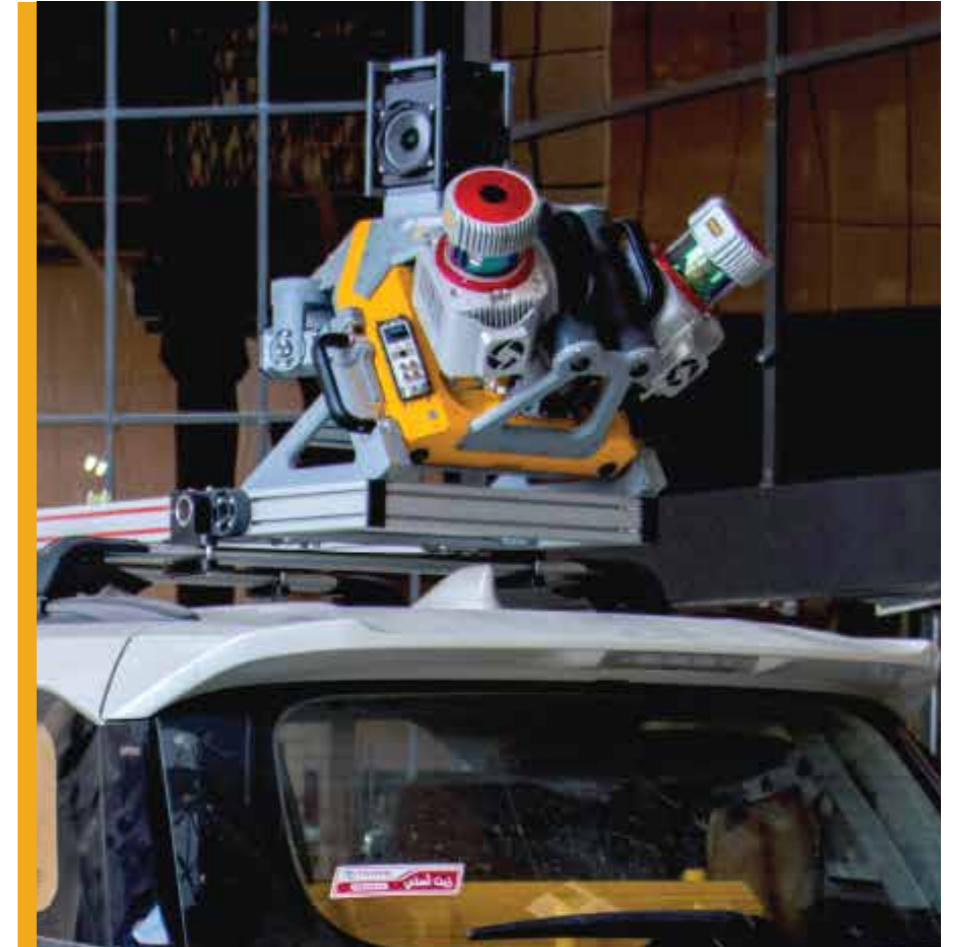




1 Geospatial surveying

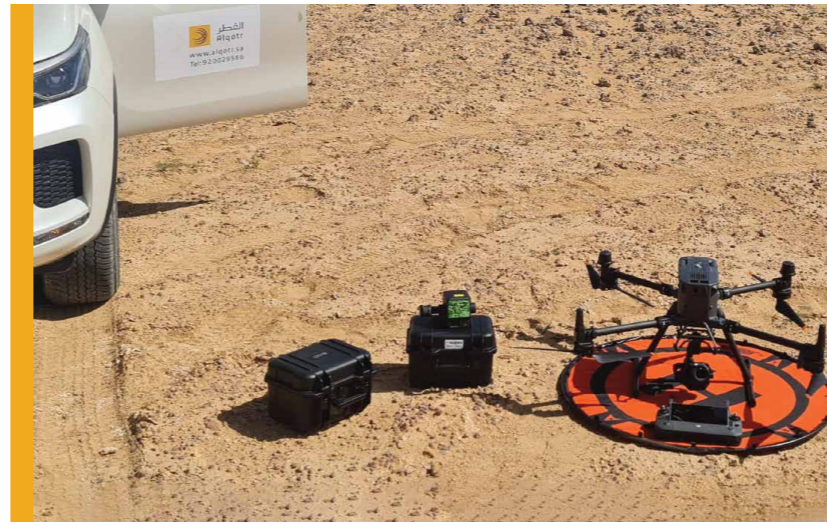
▶ Mobile Mapping System: (MMS)

- ▶ Road, Railways, Pipelines corridor survey and management.
- ▶ Smart city mapping or modelling.
- ▶ Optical (pollution or Distortion) Survey.
- ▶ Asset management survey.
- ▶ Topographic mapping.



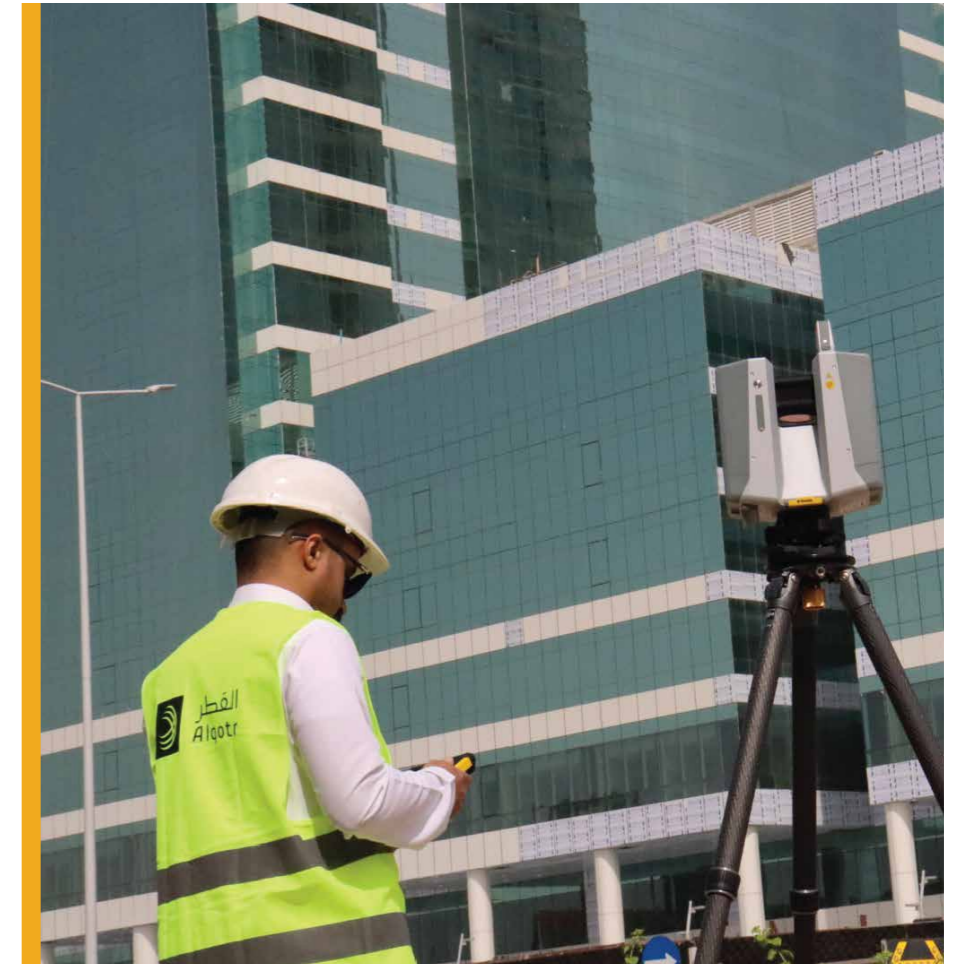
▶ Aerial Surveying:

- ▶ LiDAR Survey.
- ▶ True Orthophoto.
- ▶ DEM/DSM/DTM.
- ▶ Aerial Photography and videography.
- ▶ Inspection.
- ▶ Monitoring.
- ▶ Disasters Management.
- ▶ Agriculture Applications.
- ▶ Projects stages updates.



▶ 3D Laser Scanning:

- ▶ Buildings Architectural As-built Survey & 2D Plans.
- ▶ Archeological & Historical Documentation.
- ▶ Simulations.
- ▶ Deformation Analysis.
- ▶ Volume Calculations.
- ▶ Building's facade survey.
- ▶ Modelling for pipes for big gas stations.
- ▶ Steel structures survey and BIM modelling.
- ▶ Storage tank calibration and deformation analysis.
- ▶ Buildings and wall verticality checks.
- ▶ Floor flattening analysis for factories & big floor areas.



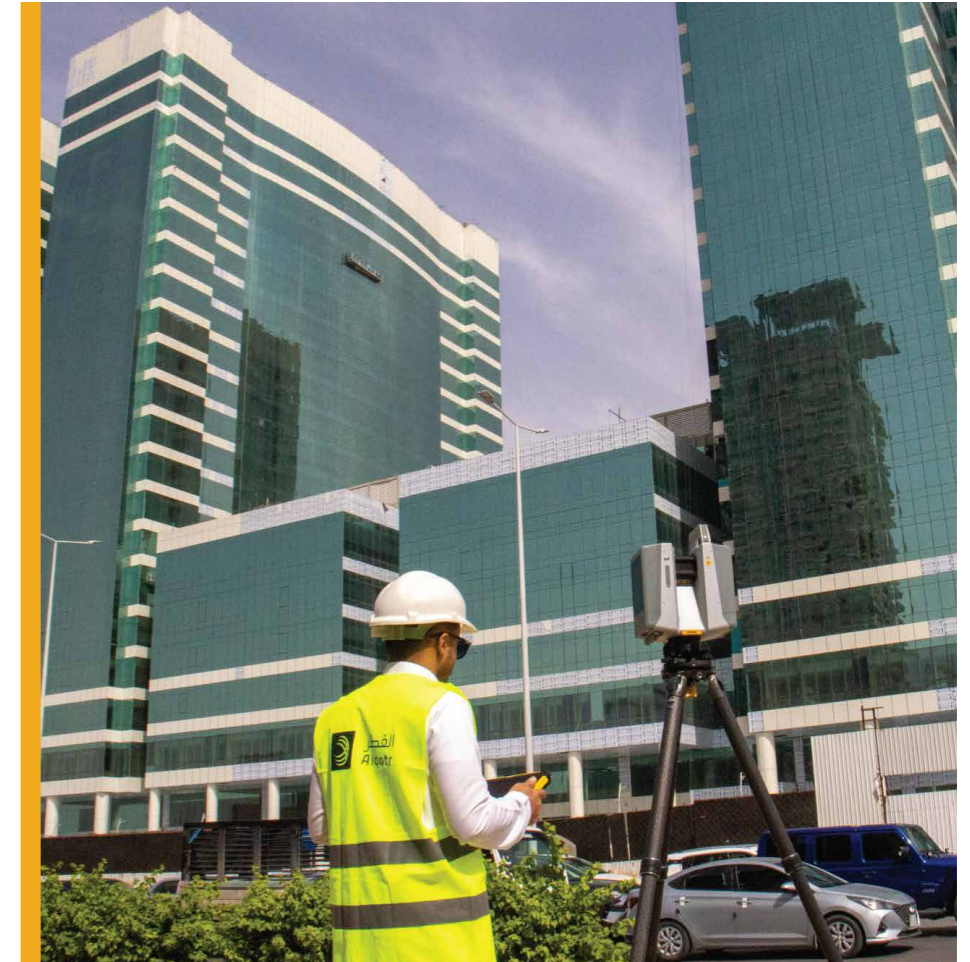
► Infrastructure and Subsurface Surveying (GPR)

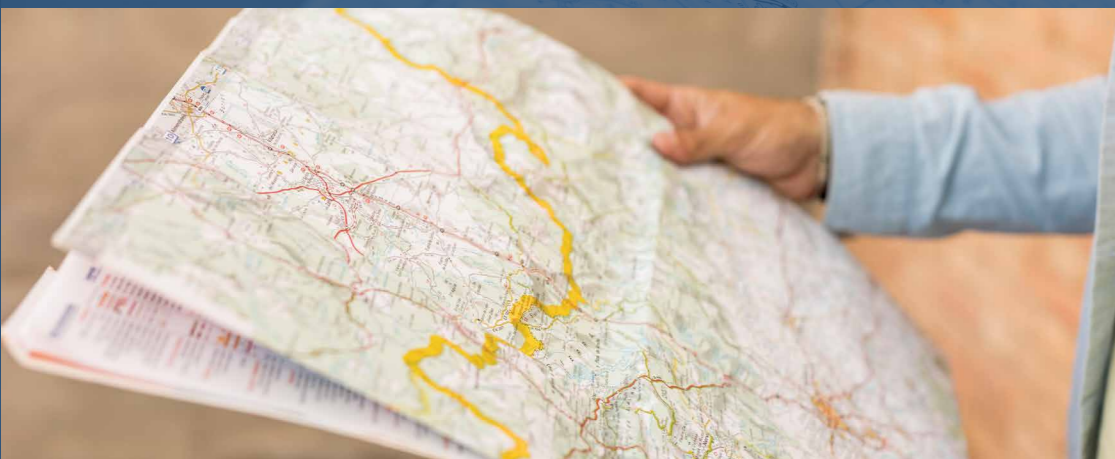
- ▶ **Metallic objects:** Metal reinforcement in concrete, buried pipes, underground storage tanks, and anything made of metal.
- ▶ **Non-metallic utilities:** Plastic pipes, ceramic pipes, fiberglass pipes, and PVC conduits.
- ▶ **Concrete structures:** Voids, cracks, delamination, rebar spacing, and thickness variations in concrete structures such as bridges, pavements, and buildings.
- ▶ **Soil variations:** Changes in soil density, moisture content, and compaction, which can indicate underground features like voids, tunnels, or buried objects.
- ▶ **Rock and bedrock features:** Fractures, voids.
- ▶ **Utilities:** Underground cables (e.g., electrical, communication), water mains, sewer lines, and drainage systems made of various materials.
- ▶ **Environmental hazards:** Underground storage tanks, contaminants, and waste materials that can pose environmental risks.



► Land Surveying Services:

- Cadastral Mapping.
- Topographic Survey.
- Physical Demarcation.
- Volumetric survey.
- Plans Validation.
- Title Deeds Studies.
- Urban (Visual) Survey.
- Validation Master Plan.

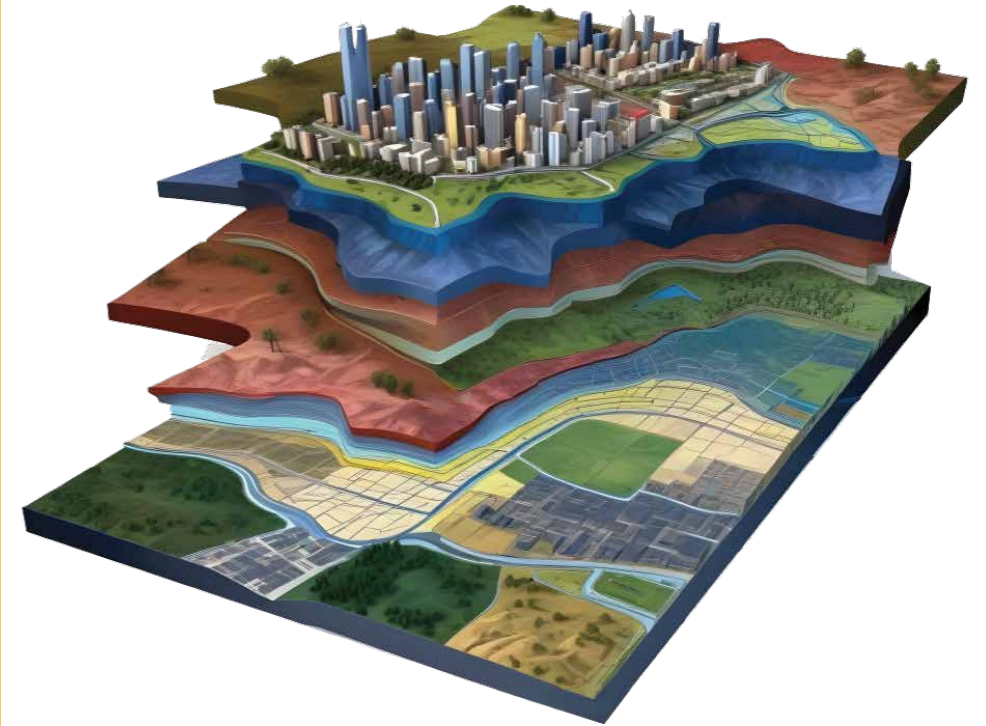




2 GIS

► GIS Services

- ▶ Smart solutions for spatial data integration.
- ▶ Workflow automating and tasks digitalization between departments that rely on spatial data.
- ▶ Building spatial applications and dashboards based on spatial data.
- ▶ Maintaining and updating geospatial databases.
- ▶ Developing geospatial data portals and applications.
- ▶ Digital maps and Spatial Planning Designs.
- ▶ Geospatial analysis.
- ▶ Transfer and digitizing services from multiple sources.
- ▶ Maps Digitizing.
- ▶ Creating “topographic” spatial models (DEM/DSM/DTM).
- ▶ Classification/enhancement/for satellite and aerial images and their applications.
- ▶ Extracting geospatial features using traditional methods and artificial intelligence techniques.
- ▶ Producing various maps (real estate, topographic, geological, internal, thermal, features and facilities).



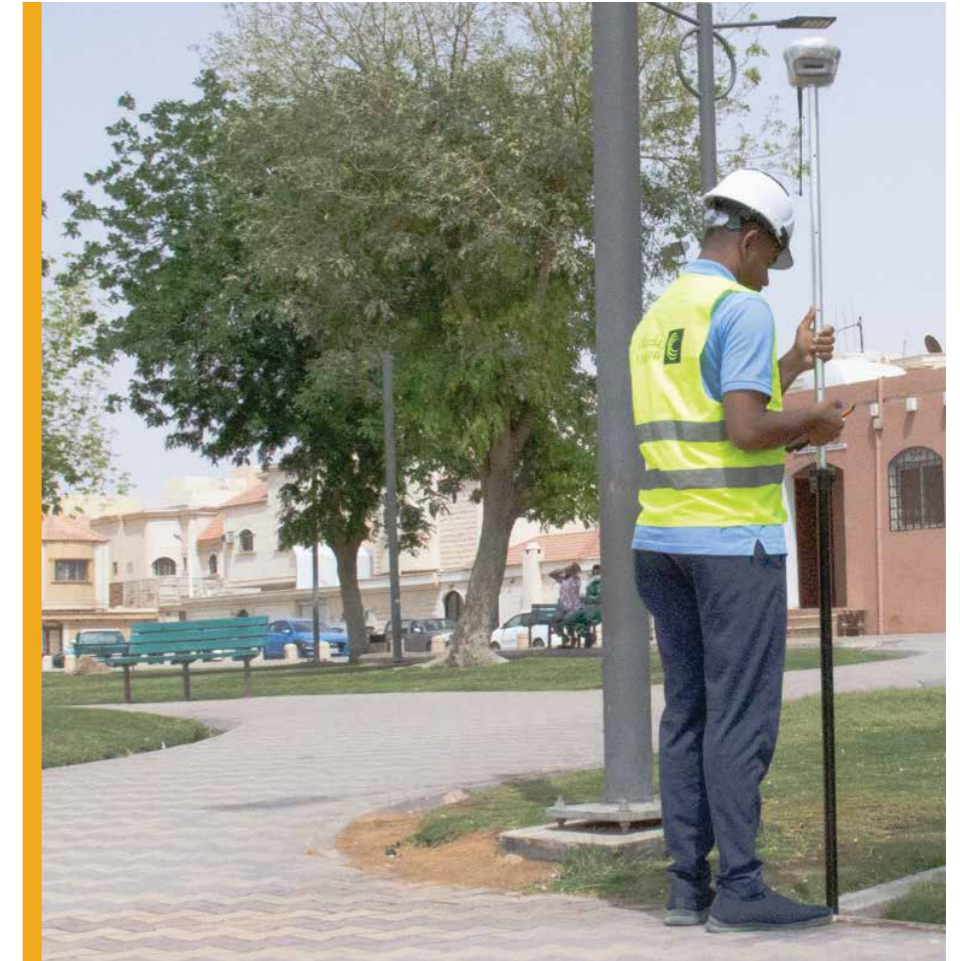


3 Technical support

▶ Technical support services:

- ▶ Survey Crews.
- ▶ Qualified Technicians and Engineers
- ▶ GIS, Surveyors, Urban planners, Geomatics engineer).

Technical support services





4 Geospatial surveying

► Urban planning services:

- Regional & Strategic planning.
- Master planning.
- Urban design.
- Detailed planning.
- Environmental & sustainable planning.
- Landscape Architecture..

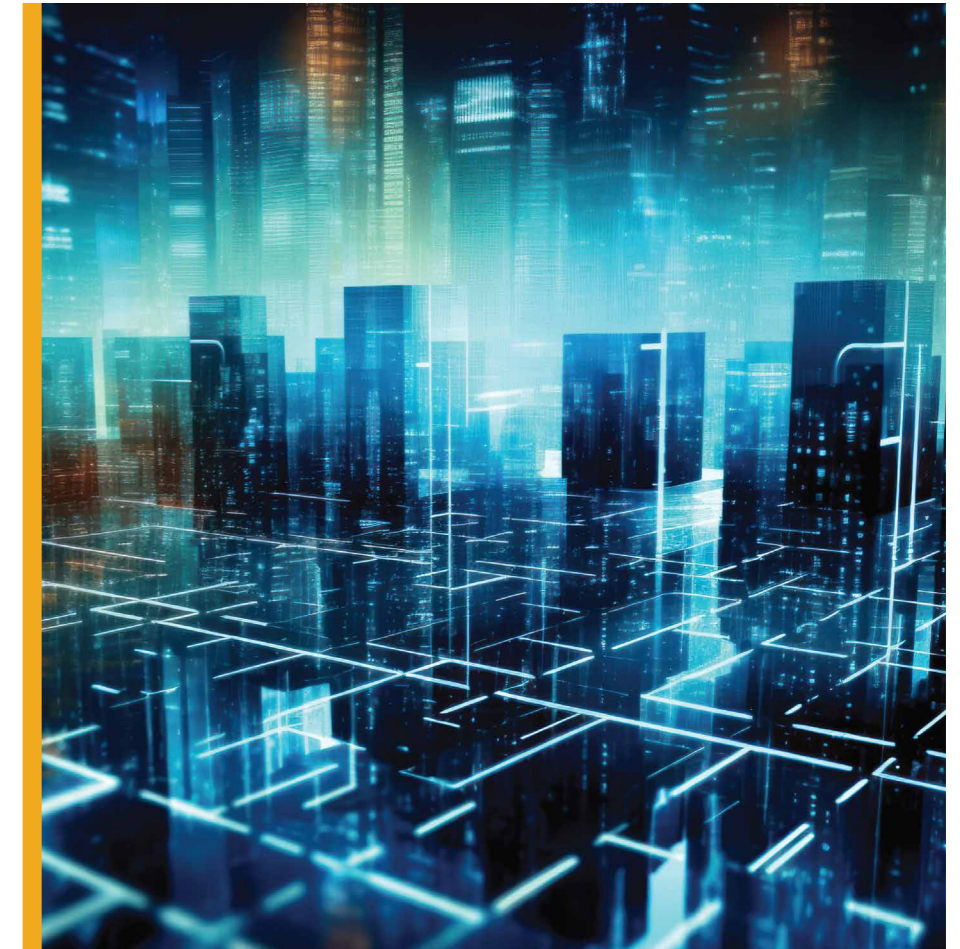




5 Digital transformation

▶ Digital Twin:

- ▶ Smart Cities Modeling and management.
- ▶ Smart assets Management.
- ▶ Digital Twins Platforms.
- ▶ Projects life cycle.



▶ Building Information Modeling (BIM):

- ▶ Scan to BIM.
- ▶ Documentation – Historical Buildings.
- ▶ Condition Assessment.
- ▶ Maintenance Program.
- ▶ Pipes modeling for factories, Power & energy stations and petrochemical plants.





6 Consulting services

▶ Due Diligence services:

- ▶ Analyzing the site
- ▶ Legal and regulatory review.
- ▶ Market analysis.
- ▶ Financial analysis.
- ▶ Risk assessment
- ▶ Stakeholder Engagement



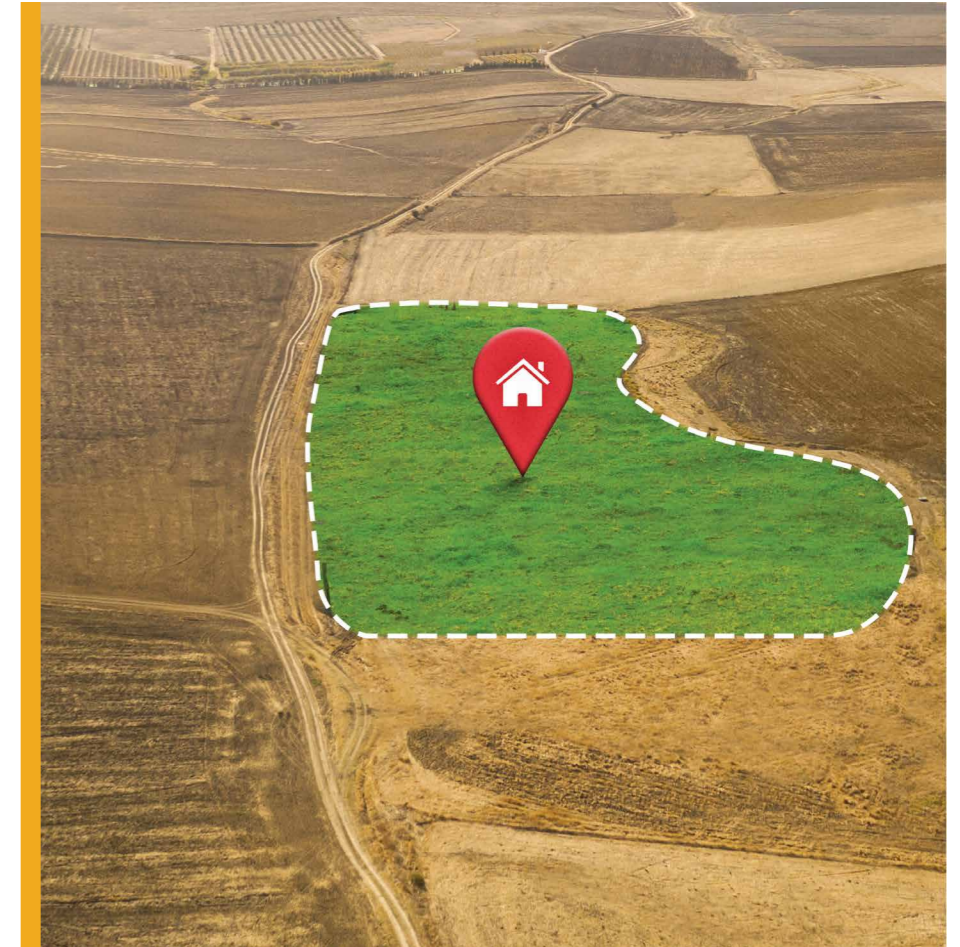
► Environmental assessment:

- The impact of the program is significant.
- Environmental Site Assessments.
- Hide and seek.
- Ecological environmental assessments.
- Hydrology and risk assessment.
- Environmental training and awareness programs.



▶ Asset management:

- ▶ Expropriation of land in the country.
- ▶ Land management solutions.
- ▶ Recording, categorizing and updating land data.
- ▶ Asset management.
- ▶ Visual scanning of land and assets.
- ▶ Providing government transactions.
- ▶ Preliminary real estate studies and valuations.
- ▶ Develop and modify customized applications for land management agencies and government departments.





successful projects

Some of our projects

The project name:

- Aerial Photography Project for Agricultural Areas -----
- Establishing a Base Map and Geospatial Platform -----
- Land acquisition management for Abha City -----
- Topographic Survey Project in Al-Bujairy Area, Diriyah -----
- Engineering Consulting Services for Surveying Accuracy and Quality Control for the Municipality of Al-Madinah Al-Munawarah Region -----
- Land Survey Services Project for Land Acquisition Development in The New Square (Development) Project -----
- Land acquisition management in NEOM City -----
- Providing Surveying Consultancy Services for Dams in Various Regions of the Kingdom -----

The entity/organization:

- Qiddiya Investment Company
- Asir Municipality
- Wadi Development Company
- Diriyah Gate Development Authority
- Municipality of Al-Madinah Al-munawarah
- The New Square
- NEOM
- Ministry of Agriculture

The project name:

- The Green Riyadh Project
- Land acquisition management for the Holy City of Mecca
- Saudi Electricity Company Project
- Topographic and Hydrological Study in Hail City
- Framework Agreement Project for Cadastral Surveying Services
- Cadastral Surveying and Parcel Subdivision Services Project
- Technical Support Project for Qiddiya
- Topographic Survey Project for Landscaping the Northern Ring Road
- Engineering Consulting Services for Surveying Accuracy and Quality Control for the Municipality of Al-Madinah Al-Munawarah Region
- Topographic Survey Project for Landscaping King Salman Road, King Khalid Road, and Jeddah Road

The entity/organization:

- Royal Commission for Riyadh City
- Haram Vision Company
- Saudi Electricity Company
- Ministry of Defense
- Real Estate Register
- Ministry of Health
- Qiddiya
- Royal Commission for Riyadh City
- Ministry of Tourism

The project name:

- Providing Technical Support Services for Surveying Works for Buildings Sites in ----- Municipality of Al-Madinah Al-Munawarah
Various Regions of the Kingdom of Saudi Arabia
- Municipal Assets Inventory for the Municipality of Northern Borders ----- Ministry of Agriculture
- Cadastral Survey Project for Baqiq Municipality ----- Eastern Province Municipality
- Establishment of stations (CORS) in Abha ----- Asir Region Municipality
- Structural Plans demarcation and Calibration Project in Tabuk ----- Tabuk Region Municipality
- Urban Surveying Works and Structural Plans Study Project in Huraymila ----- Riyadh Region Municipality
- Inventory and Documentation Project for Municipal Properties in Al-Bishah ----- Al-Bashair Municipality
- Reference Stations Data Correction Project ----- Al-Qariyah Municipality
- Magardah Geographic Information Systems Project ----- Al-Majarda
- Geotechnical Studies, surveying work, and Calibration of Plans in Al-Muzahmiyah ----- Al-Muzahimiyah

The entity/organization:

The project name:

The entity/organization:

- | | | |
|--|-------|--|
| – Cadastral digital transformation at the Municipality of Bareq | ----- | Bareq |
| – Topographic Surveys for the Municipality of Bani Saad | ----- | Bani Saad |
| – PMO structure for the Municipalities of Thadiq Governorate | ----- | Municipality of Al-Madinah Al-Munawwarah |
| – Topographic survey Project for Qaiq municipality | ----- | Thadeq |
| – Cadastral Survey Project for Baqiq Municipality | ----- | Eastern Province Municipality |
| – Operation and Maintenance Project for the Surveying department at the Municipality of Najran | ----- | Najran Municipality |
| – Topographic Survey Project and Geotechnical Study in Al-Kharj | ----- | Al-Kharj Municipality |
| – Topographic Survey Project and Removal of Informal Settlements in Roshan | ----- | ROSHN |
| – Framework Agreement Project for Cadastral Surveying Services | ----- | Real Estate Register |
| – Cadastral Surveying and Parcel Subdivision Services Project | ----- | Ministry of Health |

The project name:

The entity/organization:

- | | |
|---|---|
| – Technical Support Project for Qiddiya | Qiddiya |
| – Topographic Survey Project for Landscaping the Northern Ring Road | Royal Commission for Riyadh City |
| – Engineering Consulting Services for Surveying Accuracy and Quality Control for the Municipality of Al-Madinah Al-Munawarah Region | |
| – Topographic Survey Project for Landscaping King Salman Road, King Khalid Road, and Jeddah Road | Ministry of Tourism |
| – Providing Technical Support Services for Surveying Works for Buildings Sites in Various Regions of the Kingdom of Saudi Arabia | Municipality of Al-Madinah Al-Munawarah |
| – Municipal Assets Inventory for the Municipality of Northern Borders | Ministry of Agriculture |
| – Cadastral Survey Project for Baqiq Municipality | Eastern Province Municipality |
| – Establishment of stations (CORS) in Abha | Asir Region Municipality |
| – Structural Plans demarcation and Calibration Project in Tabuk | Tabuk Region Municipality |

The project name:

The entity/organization:

- | | |
|---|-------------------------------------|
| – Urban Surveying Works and Structural Plans Study Project in Huraymila | Riyadh Region Municipality |
| – A consultancy project to inventory and document dilapidated, deteriorating, and abandoned buildings | Riyadh Municipality |
| – North Riyadh Real Estate Study Project. | Public Investment Fund (PIF) |
| – North Riyadh Land Study Project - North Pol | |
| – Surveying the properties located within the King Salman City project | |
| – Jeddah Survey and Krookies Validation Project for unplanned land | ROSHN Real Estate Company |
| – DQ- Land Survey project west of Riyadh city | Public Investment Fund (PIF) |
| – Surveying and demarcation of some of the Ministry's land sites | Ministry of Housing |
| – The project of cadastral survey of some state property sites for the Ministry of Finance | Alalam Information Security Company |

The project name:

- Technical support for surveying and cadastral works for the sites and buildings of the Saudi Commission for Tourism and National Heritage (SCTH)
- Spatial works project to modernize geodatabases Phase III
- Preparing enhanced plans for private and governmental plans for villages and hamlets of Riyadh region - Riyadh Municipalities Agency
- Urban survey and Structural Plans Study in Al-Quwaiyah - Riyadh Municipalities Agency
- Prepare a structural land subdivision plan for 12 millions m2 land of Roshn Real Estate Company at the airport
- Preparation of preliminary studies for the SEDRA Project 6.7.8
- Preparation of SEDRA Plots (1,2,3,4,5) for the Structural Plan No. (3944)

The entity/organization:

Ministry of Culture

Jeddah Municipality

Riyadh Municipality

ROSHN

The project name:

- The project of cadastral lifting and approval of plans in the Makkah region.
- Draft preliminary study to determine the suitability of the site for the development of UJL communities
- Jeddah Airport Land Project (Environmental Studies. Hydrological
- Renaissance Project in Jeddah with an area of 44 million m2
- King Abdulaziz Road Jeddah Spine Project
- Surveying and adopting the structural plan in Hofuf
- Project of cadastral elevation and approval of the structural plan in Qatif
- Cadastral surveying Project - SABIC
- Survey lifting in Zulfi, Majmaah, Harimla, Ghatt, and Rumah

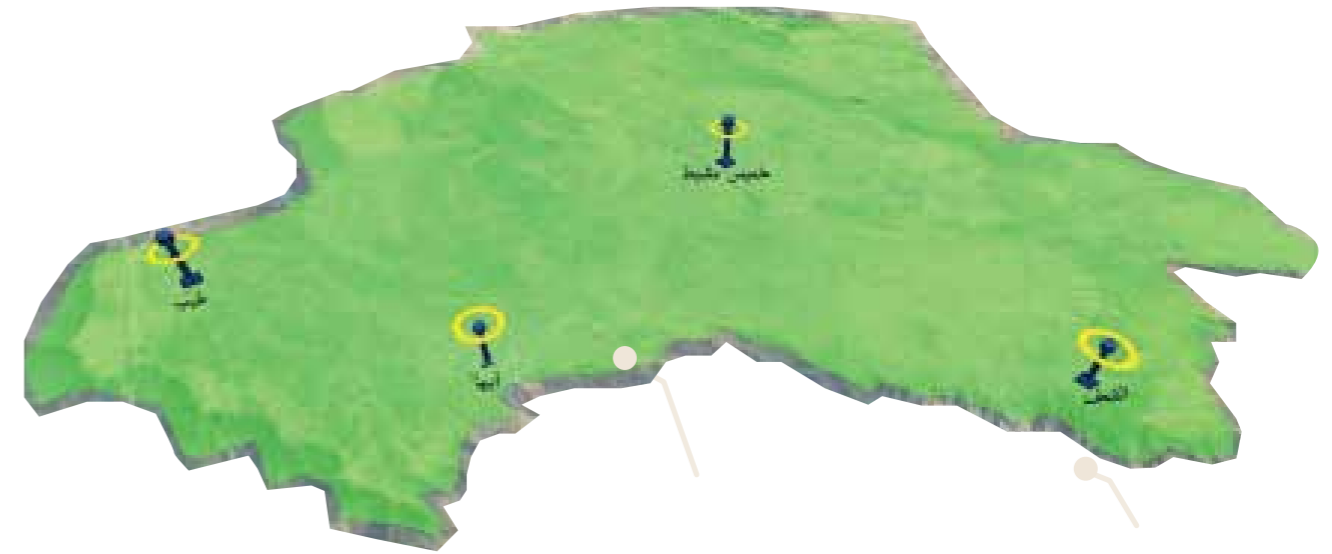
The entity/organization:

ROSHN

SABIC

► CORS STATIONS INSTALLATION PROJECT

The project aims to produce an updated base map that is produced through comprehensive cadastral survey of all roads, services and buildings in the city of Abha and the villages and centers affiliated to it.



200 Points

geodetic points to assist in updating base maps, 200 control points (GCPs)

CORS Stations 4

continuous monitoring stations for installing serving Abha and its surrounding centers

► North Riyadh Land Project

8823

of title deed
were matched

72

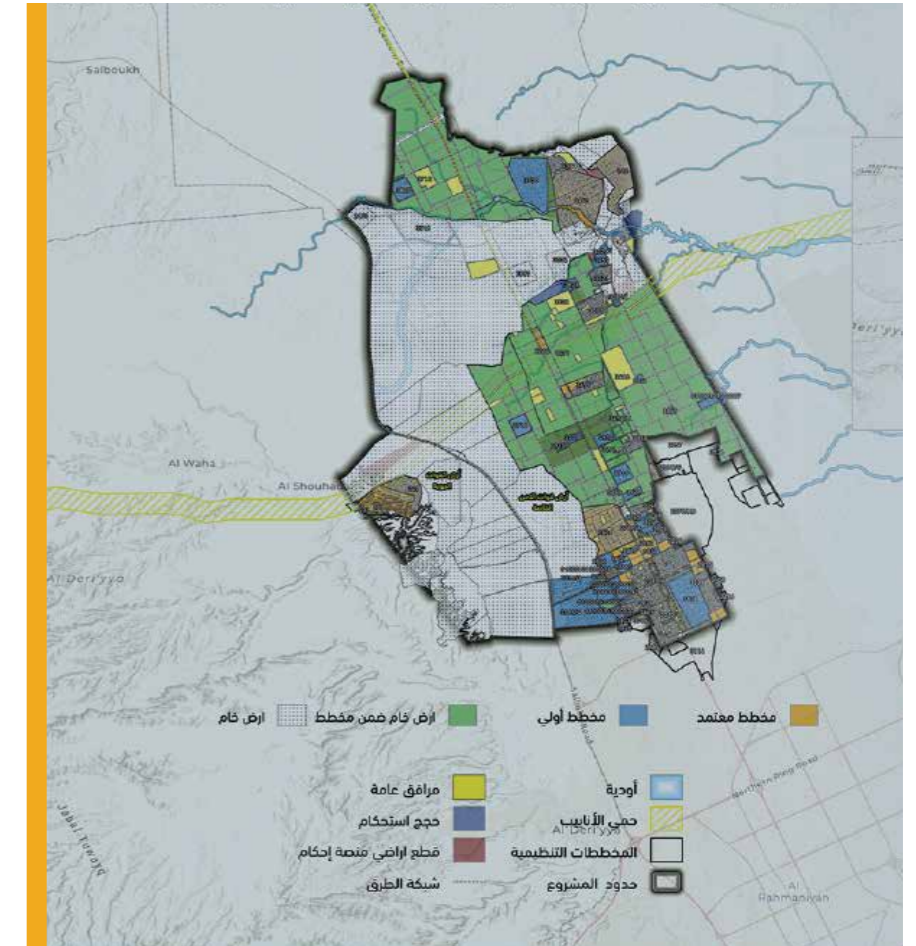
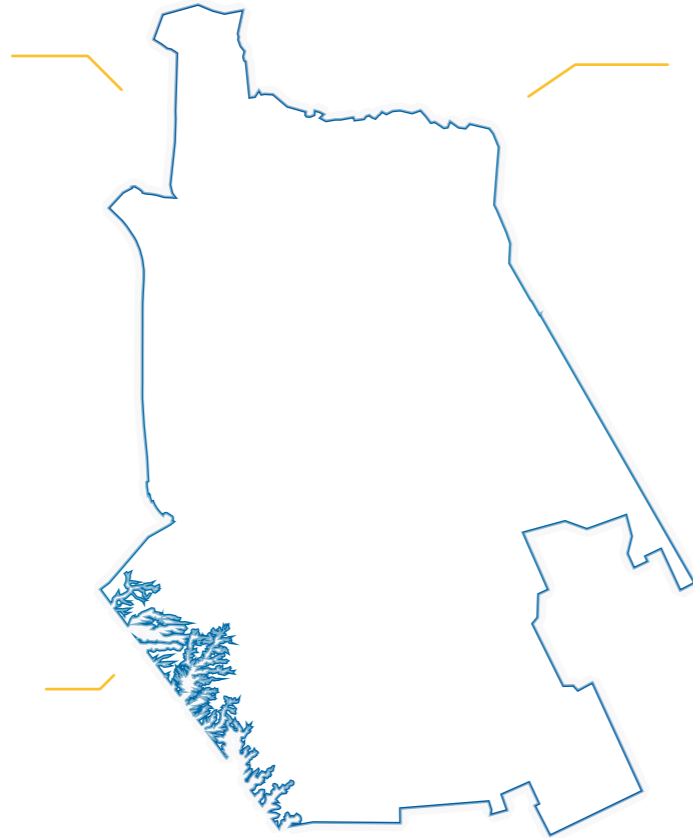
Plans processed

320KM

Surveyed land

15,265

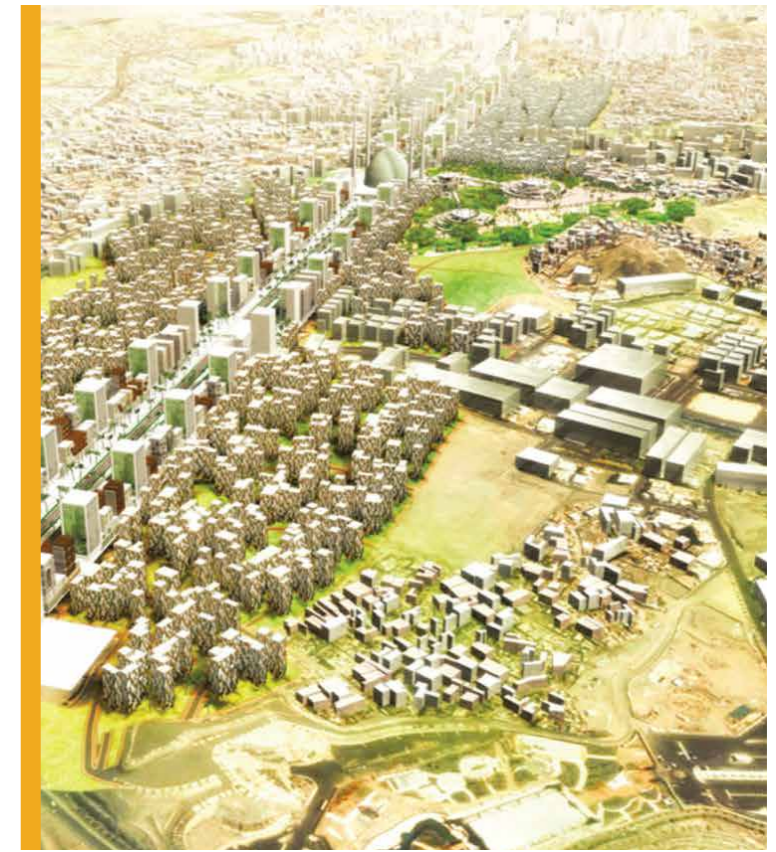
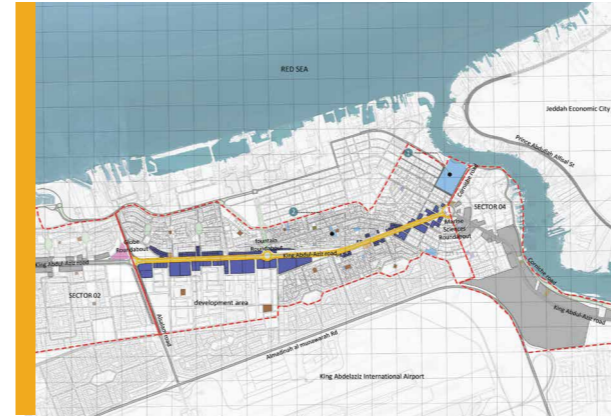
Cadastral reports



► Due Diligence of land plots along King Abdulaziz Road

The objective of the project was to assess the vacant lands (about 532 lands) located along King Abdulaziz Road in the city of Jeddah, to decide on the feasibility of utilizing these lands by studying the urban and environmental characteristics of each sector with a SWOT analysis, An assessment of the current state of:

- Identify all vacant lands in the project area by collecting available information from the concerned authorities and visiting the site.
- Meeting with all relevant stakeholders to ensure all information is gathered.
- Identify and define urban variables (aspects of location, surrounding land uses, potentials, connectivity, exposure, building patterns).
- Identify and define urban variables (aspects of location, surrounding land uses, potential, connectivity, exposure, building patterns).
- General site hydrology and drainage study.
- Determine the extent to which plots can be developed



► Land acquisition in Abha center



9736

Assets

- Total station

646

Buildings

- Laser Distance Meter
- ArcGIS Desktop,
- ArcGIS Pro, GIS

852

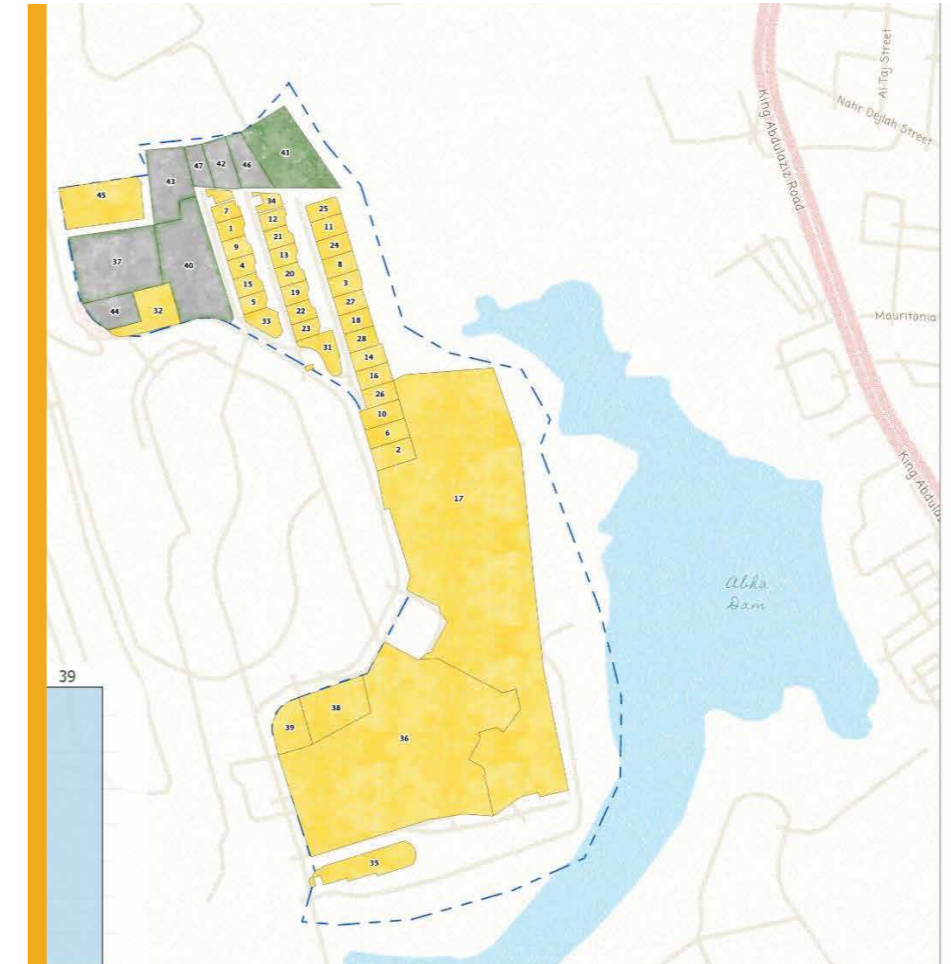
Title deed

- Mobile Mapping System
- GPS devices

1126

Parcels

- Fixed and portable autonomous flying
- Laser scanners Drone





| Our Team

► Team work:

Our team is characterized by efficiency and experience in managing various projects as we focus on credibility, quality and commitment during all phases of the project. Our team's expertise in managing stakeholder relationships ensures smooth coordination and adherence to project timelines. Continuous training is an essential part of our approach to developing our team and keeping them up to date with the latest developments in the industry. This commitment to continuous development establishes an innovative team capable of delivering quality solutions to all our clients.



► Contact us



North Ring Road with Abu Bakr Al Siddiq Exit 6 Al Wadi Neighborhood, Riyadh



Jeddah, Sharifa District Saudi Business Center (607)



Khobar City - North Khobar Neighborhood -
Prince Mohammed Bin Abdulaziz Road



info@alqotr.sa
www.alqotr.sa



920029566
0112403543





Creativity and precision